



STISIM Drive[®] Cloud

A product of fleetdrivingsim.com

STISIM Drive[®] Cloud is a cloud based driving simulator that provides a simulation platform for driver training, clinical driver/patient assessment, and performance evaluation. Additionally, STISIM Drive[®] Cloud can be used in research studies based on driving simulation, and customer specific applications that benefit from data collected from driving simulation trials. STISIM Drive[®] Cloud is universally available online and offers over 40 pre-engineered driving scenarios. Results and data from every driven STISIM Drive[®] Cloud driving scenario are available at the point of assessment, and immediately accessible via the online STISIM Drive[®] Cloud database.

At the core of STISIM Drive[®] Cloud is STISIM Drive[®] software, a fully interactive virtual reality driving simulator engineered to take advantage of cutting edge computer technology. Results from more than four decades of independently validated peer reviewed driving simulation research are incorporated into STISIM Drive[®] software and systems. More than 700 universities, government agencies, medical facilities, training centers, and corporations have used STISIM Drive[®] to conduct research, perform patient assessment and treatment, and provide driver training.

STISIM Drive[®] Cloud is designed to work with third party non-proprietary hardware. Windows based computers, Logitech steering controllers, and your choice of monitor will all support STISIM Drive[®] Cloud.

How it works

STISIM Drive® Cloud is a web portal based on a SaaS subscription model. After registration, and downloading of the STISIM Drive® Cloud app, an online dashboard becomes available via user login and password. The dashboard contains all available scenarios from which to choose. The end user chooses the scenario to drive and begins. Once the scenario is completed, a data report from the completed drive is presented and can be printed locally. Simultaneously, data from that completed drive is sent to your cloud database. The database is accessible from anywhere 24/7 via the web.

Results and data

Results and data are displayed at the end of every drive. Depending on the scenario, from 14 to 60 data points will be displayed. A comprehensive description of all scenarios with a complete glossary of all terms can be found on our website at:

- [Cloud Scenario Descriptions](#)

STISIM Drive-Cloud dashboard

All scenarios are shown on the dashboard for easy selection. For selection, simply scroll down to display the entire list of scenarios. A description will appear upon selecting a scenario. For a complete description of the scenario, the data and results a scenario will produce, and a glossary of terms see “Cloud Scenario Descriptions” on the STISIM Drive-Cloud page on the STISIM Drive website.



The screenshot shows a web browser window titled "STISIM Drive Cloud for Demo Inc." with a purple header bar. The main content area features the "STISIM DRIVE CLOUD" logo in blue and green. Below the logo, a message reads: "When ready please select a scenario and click on Drive button to start the scenario." There are four scenario cards in a row: "Training Drive" (with a steering wheel icon), "Training Turns" (with a blue arrow icon), "Training Country Driving" (with a road icon), and "Training Rural Driving" (with a map icon). To the right of these cards is a vertical scroll bar. Below the cards is a "Scenario description:" label and a large empty text box. On the right side of the dashboard, there is a vertical stack of buttons: "Drive" (with a steering wheel icon), "Help", "Logout", and "Website".

Scenario dashboard

Suggested hardware:

Computer Hardware, desktop:

- Intel Core i5® CPU or better
- NVIDIA or AMD performance graphics card with 2 GB of onboard RAM
- 8 GB of RAM
- Amplified speakers or monitor with speakers
- Windows® 7 Professional OS, Windows 10
- * For 3 screen support, contact STISIM Drive

Computer laptop:

- Intel Core i7® CPU or better
- with dedicated nVidia or AMD video card with 2 GB of onboard RAM
- 1920 x 1080 screen resolution
- 8 GB of RAM
- Windows® 7 Professional OS, Windows 10
- *for 3 screen driver field of view support, contact STISIM Drive

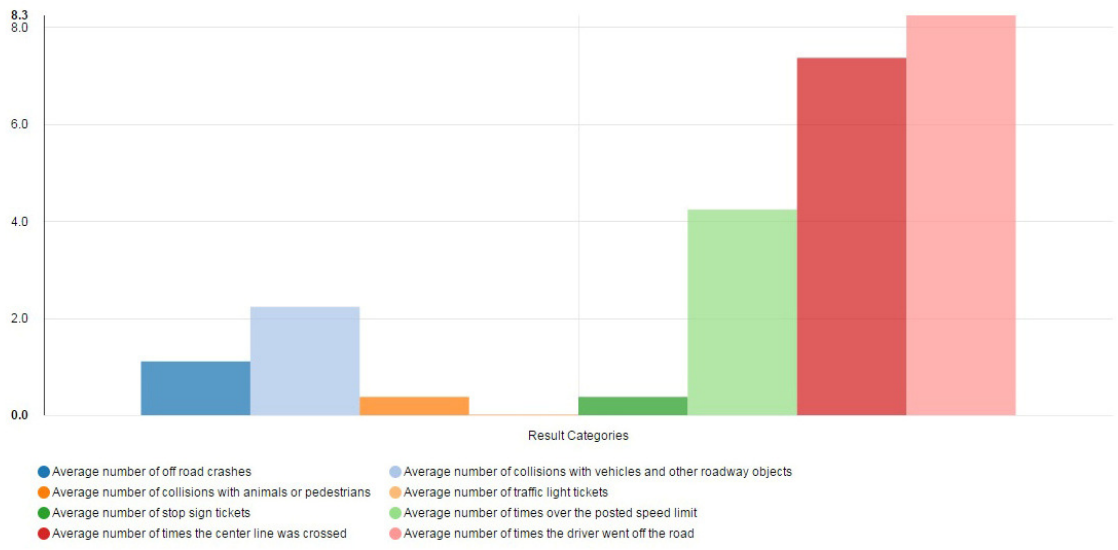
Steering controller and pedals, USB based off the shelf gaming controllers:

- Logitech G29
- Logitech G920
- Other legacy Logitech controllers
- Fanatec wheel and pedal systems

Driver Mistakes Report

Managers: Drivers: Scenario: Drive Considered:

Generate



Report Category	Average
Average time to complete drive	331.42 sec
Average number of off road crashes	1.13
Average number of collisions with vehicles and other roadway objects	2.25
Average number of collisions with animals or pedestrians	0.38
Average number of traffic light tickets	0.00
Average number of stop sign tickets	0.38
Average number of times over the posted speed limit	4.25
Average percentage of time over the posted speed limit	28.28%
Average number of times the center line was crossed	7.38
Average number of times the driver went off the road	8.25
Average percentage of time out of lanes	19.33%

Example of STISIM Drive© Cloud online result and data dashboard, accumulated data report

STISIM Drive[®] Cloud

Features:

- Universally accessible
- Use with off the shelf hardware
- Over 40 existing scenarios from which to choose
- Scenario drive results and associated data generated after every completed scenario
- Scenario replay
- SaaS subscription model
- Online help files, user resources

Benefits:

- Drivers can drive scenarios and be assessed from anywhere there is internet connectivity, with minimally required hardware.
- No proprietary hardware required.
- Runs on modern Windows based computers, with Logitech steering controllers and large screen monitors
- Hardware requirements cost less than \$1,500
- Breadth of scenarios that can fit your training and curriculum
- Scenario results and data made available to local driver
- Results and data sent simultaneously to your STISIM Drive[®] Cloud database
- Driver can immediately review the driven scenario
- Flexible plans to fit your demand and budget
- No separate annual maintenance or support fees
- Help is immediately available and at your fingertips

For more information visit us at info@fleetdrivinsim.com

